



Volume 15
September
13, 2024

DD News and Updates

Newsletter



Hello September

Inside This Issue

- Division Updates
- Things to Know
- Voting Rights
- Life Tips
- Community News
- Reporting Abuse
- BHDDH Staff Contact List
- Shared Resources

Voting Month!

- Know Your Rights
- Check Voter ID Requirements
- Accessible Voting Options
- Early Voting and Absentee Ballots
- Practice Voting
- Ask for Help
- Stay Informed

To learn more, check out Voting Rights Flyer on page 4!

Division Updates

Conflict-Free Case Management (CFCM)

Starting in September, people getting DD services will be connected to a Case Manager or Independent Facilitator (IF). This will happen slowly and not all at once.

There is nothing the person getting services needs to do. BHDDH will continue to share updates about CFCM, including when people can expect to start working with a Case Manager or IF.

As a reminder, the types of things the Case Manager or IF will help the person with are:

- Get to know the person's strengths and needs
- Help the person plan and write their Person Centered Plan (PCP)
- Make resource and relationship maps to better understand the person's whole life
- Share info about possible resources and opportunities the person may like
- Connect the person to services and supports as needed
- Check-in during the year to make sure the person is getting what they need
- Work with the person's family and other supports as needed

DD Community Forum

The next DD Community Forum is on **Tuesday, September 17, 2024 from 3-4pm.**

At the community forums, individuals will learn BHDDH news and updates from Director Kevin Savage and other members of the team. This is also a great event for BHDDH to learn more from the community. BHDDH welcomes feedback from the community.

The forums take place on Zoom and are hosted by Advocates in Action. There is an option to join online or call into the forum. All forums are recorded, and American Sign Language (ASL) interpreters are present at the event.

The forum will take place online using Zoom. You must sign-up to go to the forum. [You can sign-up for the September DD Community Forum online.](#)

Things to Know

BHDDH Your Life, Your Rights Program



This year is a big election year. We get to vote for our next President of the United States! We have a chance to vote for the person we think will lead to a better and brighter future. We also have the right to vote.

This month, the focus of the BHDDH Your Life, Your Rights Program is on voting rights. On the next page of this newsletter is the voting rights flyer. This flyer shares the rules you must meet to vote. It also shares what your voting rights are.

Remember, no one can force you to vote or keep you from voting.

Sign-Up to Vote Today

To vote in this year's election, you must register. **Register** means to sign-up.

You can register online, by mail, or in person. No matter how you register, you must do so by **Sunday, October 6, 2024.**

If you do not register to vote, you will not be allowed to vote. Learn more about voting dates and how to register by visiting these websites:

1. [Rhode Island Department of State, Register to Vote webpage](#)
2. [Vote.gov, Register to vote in Rhode Island webpage](#)

Premiere Screening of "Best Judgment: Ladd School Lessons"

Best Judgment: Ladd School Lessons



Advocates in Action (AinA) is hosting a free movie screening. The movie is called "Best Judgment: Ladd School Lessons." People living with disabilities, some of whom used to live at the Ladd Center, made this movie.

This event is on Wednesday, October 23, 2024 at 6:30pm. The event will take place at University of Rhode Island.

[You can learn more and sign-up online.](#)



Your Life, Your Rights

Voting Rights

Know Your Rights

Everyone has the right to vote. To vote in the United States of America (USA), you must be:



A USA citizen



At least age 18



A resident in your State



Registered to vote in your state

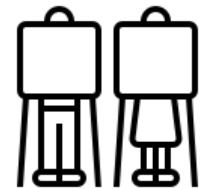
Your Voting Rights



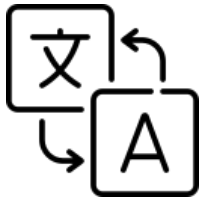
Vote for the person you want to vote for



Vote by mail instead of in person



Vote in person before Election Day



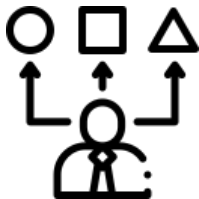
Get voting info in another language



Bring someone with you to help you vote



Be able to get in and out of voting places



Have voting options that meet your needs



Not be bullied or pressured to vote



Vote if you are not found on the list

The [State of Rhode Island Board of Elections](https://www.bhddh.ri.gov) can help you if you have trouble voting.

Life Tips

Accessibility Tip



Knowledge is power. The more you know about something, the better you can act, create, plan, and more!

Sometimes, it can be hard to find out where the best places you can go to learn are. This is especially true when searching for places online. There is so much info available online that it becomes confusing trying to figure out where to start.

Two local community agencies you can start your search for more info are:

1. The Arc Rhode Island. The Arc provides services, supports, and advocacy for people with disabilities. [Sign-up for the Arc's monthly newsletter](#) to learn about events and opportunities near you.
2. Advocates in Action (AinA). AinA is focused on helping people with disabilities become better self-advocates. Visit the [AinA website](#) to learn about their training programs, events, and resources.

Dose of Inspiration

Newspapers and TV news specials don't always report on feel good news stories. This may make it seem like not enough good things are happening in the world. Thankfully, that is simply not true. There are tons of good things happening around us each day! Need proof? Check out one of the [Positive News articles called "69 good news stories you likely didn't hear about in 2023."](#) Some of the top stories the article talks about are:

1. Progress towards human rights, including women's rights and LGBTQ rights
2. Decreases in the number of people getting sick in certain parts of the world
3. New ideas to protect our planet from climate change
4. Standing up for peace and against violence
5. Animal rights being protected and endangered species making a comeback



Community News

Butler Hospital's Black and Aging Health and Wellness

The annual Butler Hospital Black and Aging event took place last Thursday 9/5/2024. This was the 2nd year this event took place. Approximately 80 senior citizens from Providence attended this event at the West End Community Center in Providence. The mayor of Providence, Mayor Brett Smiley, attended this event as he did the year prior. There was a DJ playing music, food was provided, and the event went from 9:00 a.m. to 1:00 p.m. There were approximately 36 vendors offering senior citizens healthcare information. Hamburgers and hot dogs were provided for those who attended at no cost. Representing The Division at the event were, Peter Joly, Principal Community Development Training Specialist, Christine Allenson, Programming Services Officer and Elvys Ruiz, Administrator Business and Community Engagement pictured below.



Community News

Disability Employment Technical Assistance Center (DETAC)

The Disability Employment Technical Assistance Center (DETAC) is starting a new series. This series is called “Building Inclusive Higher Education Programs in Places Where They Don’t Exist: A Series of Family Perspectives.”

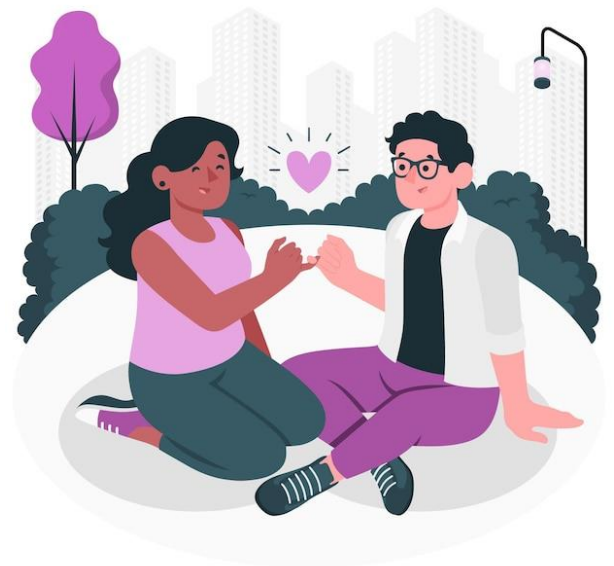
The series is made up of short articles about building Inclusive Higher Education (IHE) programs. These articles will explain what IHE is, share important lessons, and tell inspiring stories. Check out these resources by clicking the links below!

- [Overview Document](#)
- [Series Spotlight: Baiyina Muhammad](#)
- [Series Spotlight: Beth Foraker](#)
- [Series Spotlight: Julie Lackey](#)
- [Series Spotlight: Mary Hauff](#)
- [Series Spotlight: Sheila Moore](#)
- [Series Spotlight: Stephanie Smith](#)

Elevatus Training

Elevatus is an organization focused on sharing tools and info for people with disabilities. Elevatus focuses on sharing tools and about sexuality, which includes how to have healthy relationships. Some of the Elevatus’s latest tools are:

- [Healthy Boundaries Lesson](#)
- [Healthy Relationship Teaching Tool](#)
- [3 Steps to Support Children with I/DD to Have Healthy Relationships](#)
- [Free Online Workshop about sexuality with dates in September through December](#)



Community Events

RIPIN “Natural Supports - Who’s in Your Circle” Webinar

The RIPIN Self-Directed Support Program is hosting a webinar called “Natural Supports - Who’s in Your Circle.” Natural supports are the people in our family, network, and community who play an important role in our life. In this webinar, RIPIN will talk about how to find and involve these key people—whether they’re family members, friends, or community connections. Knowing and using natural supports can make a big difference in your life.

Event details are:

Date: Tuesday, September 24, 2024

Time: 6:00 PM

Location: Zoom

Register: [RSVP online by Friday, September 20, 2024](#)

Who can attend: This event is open to people managing their own services, their families, direct support professionals, and other professionals in the field.

RIPIN Self-Directed Support Program Events

Date	Event
Sept 24	Webinar: Natural Supports RIPIN SDS Team Presents, Natural Supports: Who’s in your circle? An interactive session about the people who support you.
Oct 22	Webinar: Partner Showcase Learn more about our partner organizations, Advocates in Action (AinA), and the Paul V. Sherlock Center on Disabilities.
Nov 8	In Person: The First Annual Self-Directed Support Conference! 9 am to 3 pm at the Crowne Plaza in Warwick, RI. Registration is required in advance.
Dec 3	Webinar: Peer Mentor Panel Learn more about Advocates in Action’s peer mentor training program and hear firsthand from its participants.

Report Suspected Abuse

QA Hotline 401-462-2629

Mandated Reporting

Reporting suspected occurrences of abuse, neglect, and mistreatment of individuals with developmental disabilities

To report abuse and serious incidents call the BHDDH Quality Assurance (QA) Unit hotline at (401) 462-2629. The hotline is open 24-hour hotline, seven days per week, 365 days per year. Staff respond to reported incidents of abuse, neglect, mistreatment, and financial exploitation.

BH Link is Here for You

BH Link's mission is to ensure all Rhode Islanders experiencing mental health and substance use crises receive the appropriate services they need as quickly as possible in an environment that supports their recovery. Visit the BH Link website at www.bhlink.org.

If under 18 CALL: (855) KID (543)-LINK(5465)

VISIT the 24-HOUR/7-DAY Triage Center at:

975 Waterman Avenue, East Providence, RI

Call 911 if there is a risk of immediate danger.

If you or someone you know needs support now, call or text 988 or chat 988lifeline.org



For More Information on DD Initiatives

Newsletters: sign up and view old newsletters on our [News and Updates webpage](#)

Consent Decree: <https://bhddh.ri.gov/developmental-disabilities/consent-decree>

Conflict Free Case Management (CFCM): [EOHHS CFCM website](#) or [DD Initiatives-CFCM](#)

RI DSP State Workforce Initiative: <https://riswi.org/> or [DD Initiatives-SWI](#)

Hours of Operation

Monday – Friday

8:30 AM - 4:00 PM

Contacting DDD Staff

See the full Division Contact List attached to this newsletter.

Send general questions to BHDDH.AskDD@bhddh.ri.gov.

Please do not email critical issues.

Website: www.bhddh.ri.gov

Email: BHDDH.AskDD@bhddh.ri.gov

Phone: 401.462.3421

ESPAÑOL: 401.462.3014



Division of Developmental Disabilities Staff Contacts

Main Phone: (401) 462-3421	Website: https://bhddh.ri.gov/
Fax Phone: (401) 462-2775	Behavioral Health Link (BH Link): (401) 414-5465
Spanish Phone: (401) 462-3014	Report Abuse: (401) 462-2629
TDD: (401) 462-3226	

Administrative Team

Name	Job Title	Phone	Email
Kevin Savage	Director	462-0581	Kevin.Savage@bhddh.ri.gov
Heather Mincey	Assistant Director	462-1218	Heather.Mincey@bhddh.ri.gov
Brenda DuHamel	Associate Director, Admin Services	462-3010	Brenda.DuHamel@bhddh.ri.gov
Anne LeClerc	Associate Director, Prog Performance	462-0192	Anne.LeClerc@bhddh.ri.gov
Tracy Levesque	Associate Director, Clinical	462-0209	Tracy.Levesque@bhddh.ri.gov
Christine Botts	Deputy Administrator	462-2766	Christine.Botts@bhddh.ri.gov
Cindy Fusco	Interdepartmental Project Manager	462-6689	Cynthia.Fusco@bhddh.ri.gov
Natalie Munoz	Chief Implementation Aide	462-3016	Natalie.Munoz@bhddh.ri.gov

Eligibility Unit

Name	Job Title	Phone	Email
Brenda DuHamel	Associate Director, Admin Services	462-3010	Brenda.DuHamel@bhddh.ri.gov
Karen Lowell	Casework Supervisor II	462-2209	Karen.Lowell@bhddh.ri.gov
Lori Lombardi- Burns	PASRR	462-0089	Lori.Lombardiburns@bhddh.ri.gov
Jill Murphy	Social Caseworker II	462-2409	Jill.Murphy@bhddh.ri.gov
Kim Wright	Information Aide	462-2584	Kimberly.Wright@bhddh.ri.gov

SIS Unit

Name	Job Title	Phone	Email
Tracy Levesque	Associate Director, Clinical	462-0209	Tracy.Levesque@bhddh.ri.gov
Donna Standish	Casework Supervisor II	462-2628	Donna.Standish@bhddh.ri.gov
Stephanie Andrezzi	Implementation Aide	462-1859	Stephanie.Andrezzi@bhddh.ri.gov
Wendy Cormier	Social Caseworker II	462-1302	Wendy.Cormier@bhddh.ri.gov
Jamie Fitzgibbons	Social Caseworker II	462-2510	Jamie.Fitzgibbons@bhddh.ri.gov
Betty Staplins	Social Caseworker II	462-0449	betty.staplins@bhddh.ri.gov

Residential

Name	Job Title	Phone	Email
Tracy Levesque	Associate Director, Clinical	462-0209	Tracy.Levesque@bhddh.ri.gov
Melissa Greenlief	Administrator, Community Services	462-2459	Melissa.Greenlief@bhddh.ri.gov

Case Management Units

Name	Job Title	Phone	Email
Brenda DuHamel	Associate Director, Admin Services	462-3010	Brenda.DuHamel@bhddh.ri.gov
Marguerite Belisle	Casework Supervisor II	462-0714	Marguerite.Belisle@bhddh.ri.gov
Amie Adams	Social Caseworker II	462-2480	Amie.Adams@bhddh.ri.gov
GinaMarie Debartolo	Social Caseworker II	462-3402	GinaMarie.Debartolo@bhddh.ri.gov
Amber Matson	Social Caseworker II	462-1555	Amber.Matson@bhddh.ri.gov
Suzanne Porter	Social Caseworker II	462-1972	Suzanne.Porter@bhddh.ri.gov
Kaitlin Sarkees	Social Caseworker II	462-4075	Kaitlin.Sarkees@bhddh.ri.gov
Heather Soares	Social Caseworker II	462-6097	Heather.Soares@bhddh.ri.gov
Souphalek Muriel	Casework Supervisor II	462-2512	Souphalak.Muriel@bhddh.ri.gov
Mary Cameron	Social Caseworker II	462-1307	Mary.Cameron@bhddh.ri.gov
Lauree Champagne	Social Caseworker II	462-2728	Lauree.Champagne@bhddh.ri.gov
Megan Gilbert	Social Caseworker II	462-2524	Megan.Gilbert@bhddh.ri.gov
Dayna Hansen	Social Caseworker II	462-2505	Dayna.Hansen@bhddh.ri.gov
Judy Smith	Social Caseworker II	462-1327	Judith.Smith@bhddh.ri.gov
Mary Beth Stevens	Casework Supervisor II	462-2438	Marybeth.Stevens@bhddh.ri.gov
Timothy Cronin	Social Caseworker I	462-1721	Timothy.Cronin@bhddh.ri.gov
Jennifer Gouveia	Social Caseworker I	462-0098	Jennifer.Gouveia@bhddh.ri.gov
Erin Simonelli	Social Caseworker II	462-2502	Erin.Simonelli@bhddh.ri.gov
Lena Sousa	Social Caseworker II	462-1834	Lena.Sousa@bhddh.ri.gov
Joseph Tevyaw	Social Caseworker II	462-2474	Joseph.Tevyaw@bhddh.ri.gov
Stacey Perry	Casework Supervisor II	462-3402	Stacey.Perry@bhddh.ri.gov
JoAnn DiMuccio	Social Caseworker II	462-2523	JoAnn.DiMuccio@bhddh.ri.gov
Katrina Ferry	Social Caseworker II	462-2529	Katrina.Ferry@bhddh.ri.gov
Heidy Henriquez	Social Caseworker II	462-3022	Heidy.Henriquez@bhddh.ri.gov
Crystal Morel	Social Caseworker II	462-1329	Crystal.Morel@bhddh.ri.gov

Independent Facilitation Unit

Name	Job Title	Phone	Email
Meaghan Jencks	Casework Supervisor II	462-2113	Meaghan.Jencks@bhddh.ri.gov
Yolande Ramos	Casework Supervisor II	462-1059	Yolande.Ramos@bhddh.ri.gov

Transition Unit

Name	Job Title	Phone	Email
Heather Mincey	Assistant Director	462-1218	Heather.Mincey@bhddh.ri.gov
Susan Hayward	Administrator, Youth in Transition	462-2519	Susan.Hayward@bhddh.ri.gov
Carolee Leach	Professional Services Coordinator	462-1723	Susan.Hayward@bhddh.ri.gov
Laurie Rossi	Implementation Aide	462-2563	Laurie.Rossi@bhddh.ri.gov

Community Services

Name	Job Title	Phone	Email
Heather Mincey	Assistant Director	462-1218	Heather.Mincey@bhddh.ri.gov
Jackie Camilloni	Coordinator, Self Direction	462-6608	Jackie.Camilloni@bhddh.ri.gov
Elvys Ruiz	Administrator III, Employment	462-3857	Elvys.Ruiz@bhddh.ri.gov
Gerard (Jay) MacKay	Associate Administrator, Employment	462-5279	Gerard.Mackay@bhddh.ri.gov
Steven Seay	Coordinator, Integrated Comm Services	462-6609	Steven.Seay@bhddh.ri.gov

Communications and Training

Name	Job Title	Phone	Email
Anne LeClerc	Associate Director, Prog Performance	462-0192	Anne.LeClerc@bhddh.ri.gov
Johanna Mercado	Coordinator, Communications	462-6646	Johanna.Mercado@bhddh.ri.gov
Amethys Nieves	Associate Admin, Communications	462-6629	Amethys.Nieves@bhddh.ri.gov
Kelly Petersen	Chief of Training & Staff Development	462-6592	Kelly.Petersen@bhddh.ri.gov
Robin Gannon	Clinical Training Specialist	462-6691	Robin.Gannon@bhddh.ri.gov
Peter Joly	Principal Training Specialist	462-6638	Peter.Joly@bhddh.ri.gov

NATIONAL
VOTER
REGISTRATION
DAY

WITH THE

Caravan for Disability Freedom and Justice

SEPT
17

11AM-2PM

FOOD MUSIC SPEAKERS RESOURCES SWAG

R CHARLESGATE (N. MAIN & DOYLE)
Free parking in Wholefoods Plaza

22 WARWICK MALL (VILLA DEL RIO)
Free parking between Target and Apple Cinema
ELMWOOD & RESERVOIR
Free parking at Department of Human Services
or Walgreens

57 SMITH & FREDERICK (PROVIDENCE)
Free parking in Aldi Plaza

78 TAUNTON & PAWTUCKET
33 (BURGER KING)
Free parking in Shaws Plaza or Burger King



OSCIL OCEAN STATE CENTER
FOR INDEPENDENT LIVING



Disability Rights
RHODE ISLAND

HOSTED BY FAST FORWARD COLLEGE COACHING

Raising Voices: Owning & Honoring Your 'Secret Sauce'

A conversation for young adults with disabilities and those who support them about self-advocacy, owning and honoring your identity & finding community by being your authentic self.

THURS.
SEPTEMBER 19
7:00pm EST

via Zoom



SPECIAL GUEST: ERIN BROWN
Disability Inclusion Consultant

JENNIFER SULLIVAN
Author, Educator, Owner of
Fast Forward College Coaching



REGISTER:

- 1) Email: lauren@fastforwardcollegecoaching.com
- 2) Visit: fastforwardcollegecoaching.com
- 3) Scan the QR code

- ▶ After registration, zoom link will be sent via email
- ▶ Students are strongly encouraged to attend. All are welcome!

About Erin Brown:

Erin serves as The Bahamas' most influential Disability Inclusion Consultant, currently leading the University of the Bahamas, Office of Disabilities and Compliance, she is the President of the only multidimensional disability-led consultancy business regionally and non-governmental organization nationally; Erin Brown Connects, (EBC) Disability Advocacy and Inclusion Management located in the capital of The Bahamas. With over seventeen years of experience in providing national agencies and community organizations, regional civil society and international bodies with Disability Inclusion strategies in areas of Inclusive Policy Reform , Disaster and Emergency Risk Management, People with Disabilities (Equal Opportunities) Act 2014 Compliance, Paralympic Development , Inclusive Education and Health Systems.

Erin's specific focus includes women, youth and entrepreneurs with disabilities ; becoming the first and only Bahamian PT52 female Paratriathlete "Erin Bionic Brown" to train in the US Olympic and Paralympic Center in Colorado Springs and competed in the 2020 Paralympic Games ParaTriathlon Tokyo Qualifier ensuring the establishment of the Bahamas Paralympic Committee. Erin continues to inspire people with disabilities in The Bahamas, the Caribbean region and our global community to show up authentically. She is the only daughter of the late Senator Edwin Vykee Brown and Tany Aileen Brown nee Ambrister both nation builders and a mother of three children.

[\[fastforwardcollegecoaching.us2.list-manage.com\]](http://fastforwardcollegecoaching.us2.list-manage.com)



PERSONAL CARE ASSISTANT (PCA) TRAINING

A PCA is a professional caregiver who provides individualized services to people for daily living.

What's included?

- ✓ 10-week Professional Training
- ✓ 10 Hour internship placement upon completion
- ✓ CPR & First Aid Certification
- ✓ Home Caretaking Skills
- ✓ Resume and Interviewing Skills
- ✓ Communication and Workplace Behavior
- ✓ Certificate of Completion
- ✓ Job Placement Services



***Classes scheduled to begin
on September 23, 2024***

**EARN: \$100 for
transportation on the
1st week**

**\$100 stipend on
week 5**

**\$300 upon
internship
completion**

**\$500.00
PAID TOTAL**

Follow this link to apply!



**Class to Be Held in
Woonsocket and
Portsmouth**

Questions???
Call Rachel Pavao
401-440-8772
email:
rpavao@lookingupwards.org



TOPICS

- What tools and resources do you need to excel in your role?
- How can we improve communication and support?
- What training and professional development opportunities would benefit you?

BENEFITS OF PARTICIPATING

- Network with fellow DSPs
- Contribute to meaningful change
- Receive a \$30 gift card for your participation

LISTENING SESSIONS

For Direct Support Professionals who work in Rhode Island



Your voice matters!

Register at <https://z.umn.edu/DSPListeningSession> or use the QR code above. Interpreters will be available.



Join us Monday, Sept. 23, or Tuesday, Sept. 24, at various times and locations across the state. See the registration form for details.



TEMAS

- ¿Qué herramientas y recursos necesitas para destacar en tu rol?
- ¿Cómo podemos mejorar la comunicación y el apoyo?
- ¿Qué oportunidades de capacitación y desarrollo profesional te beneficiarían?

BENEFICIOS DE PARTICIPAR

- Conéctate con otros Profesionales de Apoyo Directo
- Contribuye a generar un cambio significativo
- Recibe una tarjeta de regalo de \$30 por tu participación

SESIONES DE CONVERSACIONES

Para Profesionales de Apoyo Directo que trabajan en Rhode Island.



¡Tu voz importa!

Regístrate en <https://z.umn.edu/DSPlisteningession> o utiliza el código QR de arriba. Habrá intérpretes disponibles.



Acompáñanos el lunes 23 de septiembre o el martes 24 de septiembre en diferentes horarios y ubicaciones a lo largo del estado. Consulta el formulario de Inscripción para más detalles.

Paul V. Sherlock Center

On Disabilities / Rhode Island College

FAMILY EMPLOYMENT AWARENESS TRAINING (FEAT)

ONLINE SERIES USING ZOOM

Sept. 23, 26, 30 and Oct. 3, 2024

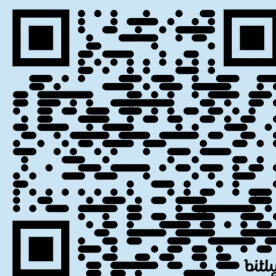
The Sherlock Center invites families and their young adults with developmental disabilities (**14 to 22 years of age**) and the professionals who support them to attend this **FREE** series about school-to-employment and everything in between.

Attendees are encouraged to attend all sessions of this four-part series, but it is not required. Each session will be a live, interactive training using Zoom. Participants are strongly encouraged to actively engage during the training series.

SESSION 1: SEPT. 23 5 to 6:30 p.m.	BUILDING THE DREAM OF EMPLOYMENT <ul style="list-style-type: none">• Introduction to employment in Rhode Island• Panel of youth successfully employed in Rhode Island
SESSION 2: SEPT 26 5 to 6:30 p.m.	PLANNING THE TRANSITION TO EMPLOYMENT <ul style="list-style-type: none">• Role of the family in planning for employment• School role in planning for employment (Transition IEP)
SESSION 3: SEPT. 30 5 to 6:30 p.m.	POSSIBILITIES FOR EMPLOYMENT <ul style="list-style-type: none">• Supported and customized employment• Outside-the-box employment possibilities
SESSION 4: OCT. 3 5 to 6:30 p.m.	ACCESSING ADULT SUPPORTS FOR EMPLOYMENT <ul style="list-style-type: none">• Office of Rehabilitation Services• Division of Developmental Disabilities• Self-employment

Save your spot
for these
free sessions!

Register today at
<https://bit.ly/featri>



This training is conducted in English; however, ASL or language interpreter services may be requested. Make your request known in the registration form or by contacting Vanessa Hollands at vhollands@ric.edu or Crystal Cerullo at ccerullo@ric.edu as soon as possible.

Phone: 401-456-8072

Fax: 401-456-8150

TTY via RI Relay: 711 or
800-745-5555

Spanish via RI Relay: 711 or
866-355-9214

ALL PARTICIPANTS RECEIVE:

- Training materials and resources.
- Opportunity to network with families, employees, and entrepreneurs.
- Knowledge of state, federal and community resources that support employment.

Self-Directed Supports Network

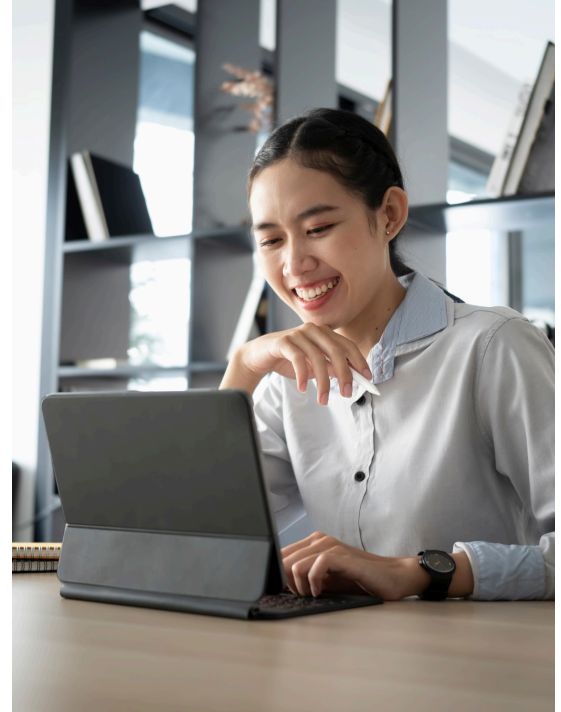
A network of individuals and family members using self-directed supports in Rhode Island

Online meeting

7 – 8:30 p.m.

Wednesday, Sept. 25, 2024

Heather Mincey, assistant director of the Division of Developmental Disabilities, and DDD consultant Andrew McQuaide will discuss Independent Facilitation (IF) and how it will be a bridge to Conflict-Free Case Management (CFCM).



*Invite your
Direct Support
Professionals
to join!*

This meeting will take place online using Zoom. When you register, you will receive an email with the directions and a password to join the meeting. You can connect by computer, mobile device or listen using your telephone. You may be prompted to download an app depending on the device you plan to use. This session will be recorded.

The Self-Directed Supports Network is a resource for individuals and families using self-directed supports through the Division of Developmental Disabilities. Meetings provide an opportunity to share experiences and learn from others.

Agenda

- 7 – 7:15 Introductions and updates
- 7:15 – 8:15 IF/CFCM discussion
- 8:15 – 8:30 Questions and closing

Registration link

<https://bit.ly/3SXi52Z>

If you need a reasonable accommodation (e.g., ASL interpreter, large print) or information in a language other than English, please make your needs known when you register.

Inclusion Seekers

Investing in the Story of Belonging

Join us to bridge the gap between people with disabilities and their communities. We'll explore support, tackle disconnection, and heal historical separations.

WHEN: September 26, 2024

WHERE: Harbor Lights | 200 Gray St. Warwick, RI

TIME: 8:30 am - 2:00 pm

**A light breakfast and lunch will be provided. Please note any food allergies in the RSVP*



Special guest Tim Vogt Executive Director of
Starfire, Cincinnati, Ohio

[RSVP HERE](#)

