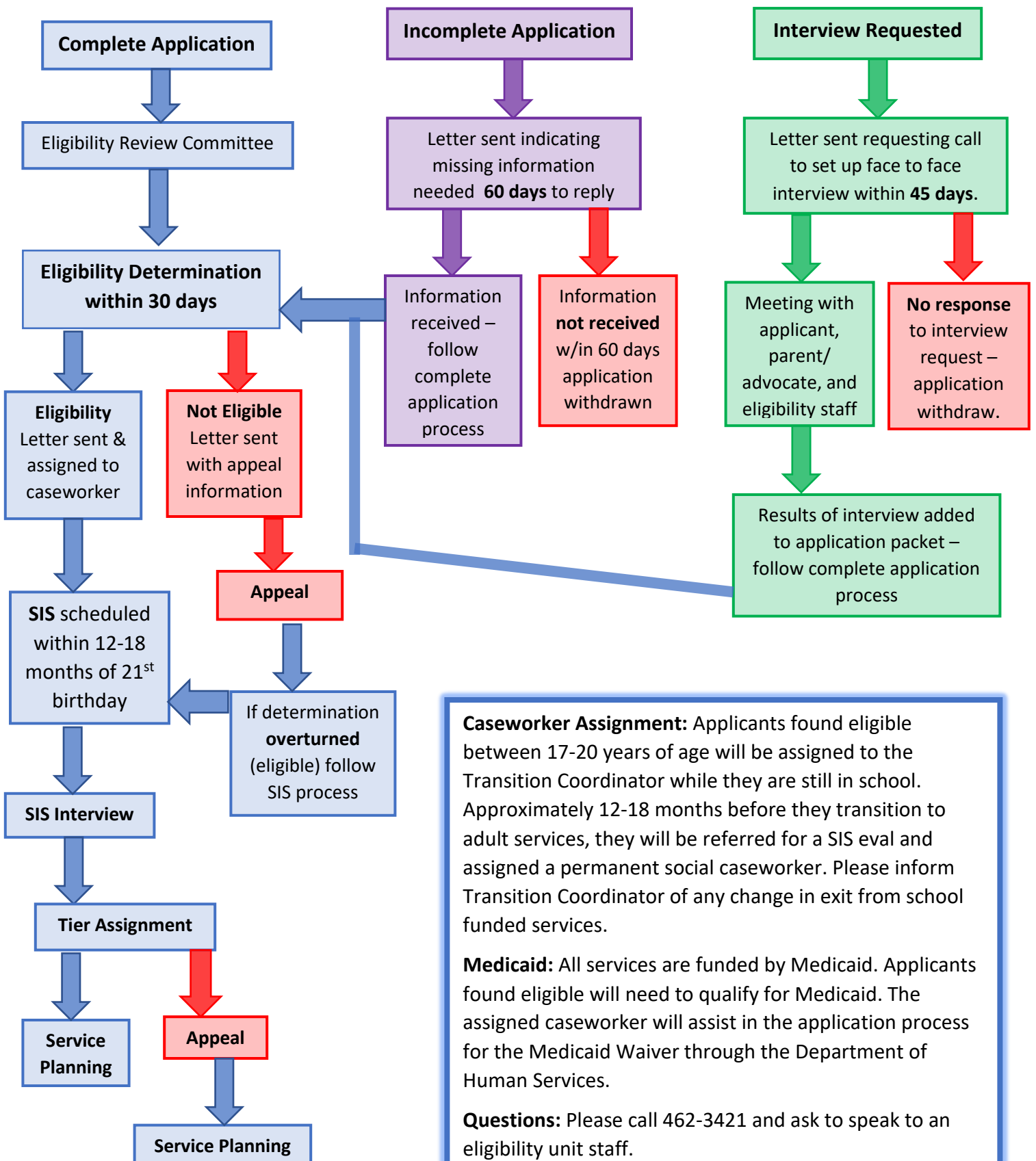


Application Process for Developmental Disabilities (DD) Services



Caseworker Assignment: Applicants found eligible between 17-20 years of age will be assigned to the Transition Coordinator while they are still in school. Approximately 12-18 months before they transition to adult services, they will be referred for a SIS eval and assigned a permanent social caseworker. Please inform Transition Coordinator of any change in exit from school funded services.

Medicaid: All services are funded by Medicaid. Applicants found eligible will need to qualify for Medicaid. The assigned caseworker will assist in the application process for the Medicaid Waiver through the Department of Human Services.

Questions: Please call 462-3421 and ask to speak to an eligibility unit staff.